

# Groundwater Basin Prioritization

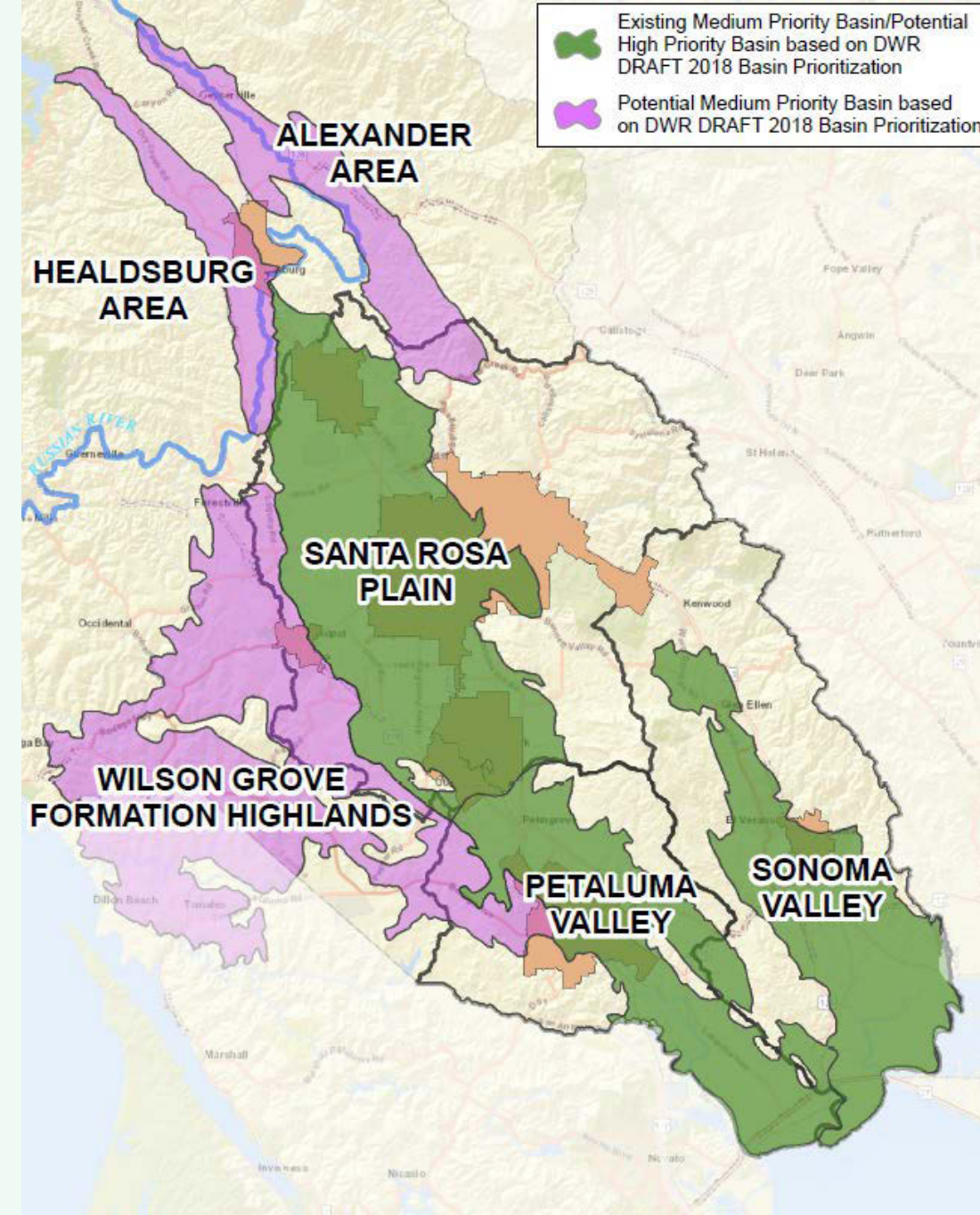
Sonoma Valley Groundwater Sustainability Agency  
Board of Directors Meeting  
June 25, 2018

# Groundwater Basin Prioritization Overview

- **Conducted statewide by California Department of Water Resources (DWR) for all 517 groundwater basins and subbasins**
- **Initial Prioritization done in 2014 prior to SGMA**
- **DWR required to reassess prioritization whenever Bulletin 118 is updated**
- **2018 Prioritization Process conducted following 2016 Update to Bulletin 118.**
- **Changes from 2014 and DRAFT 2018 process relevant to Sonoma County:**
  - **Required to incorporate potential impacts to streamflow and habitat**
  - **Utilized additional available information and metrics**
  - **Changed methodology for ranking basin components**

# 2018 DRAFT Basin Prioritization

- **Three Existing SGMA Basins Elevated from Medium to High Priority**
  - Santa Rosa Plain Subbasin
  - Petaluma Valley Basin
  - Sonoma Valley Subbasin
- **Three Very Low Priority Basins Elevated to Medium Priority**
  - Alexander Area Subbasin of Alexander Valley
  - Healdsburg Area Subbasin (Dry Creek Valley and portion of Russian River Valley)
  - Wilson Grove Formation Highlands Basin



# DWR Schedule for 2018 Basin Prioritization

Events	Dates*
<b>Prioritization based on 2016 Basin Boundary Modifications</b>	
Public Comment Period Opens	May 18, 2018
Webinar	May 30, 2018
Public Meetings	June 25-28, 2018
Public Comment Period Closes	August 20, 2018
Finalize Prioritization (based on 2016 Basin Boundary Modifications)	mid-November
<b>Prioritization based on 2018 Basin Boundary Modifications</b>	
Release of Draft Prioritization for Modified Basins	late November
Public Comment Period	November - December
Release of Final Prioritization (based on 2018 Basin Boundary Modifications)	February 2019

*\*Last modified on 6/20/2018. All dates are subject to change.*

**Local DWR Public Meeting Planned for Tuesday, June 26 at 1pm in Healdsburg**

Krug Event Center, Best Western Dry Creek Inn

198 Dry Creek Road, Healdsburg

# Sonoma Valley DRAFT Prioritization Component Scoring

1. Population Density: 2 of 5
- 2. Population Growth Projection: 2 of 5 (previously 1 of 5)**
- 3. Public Supply Well Density: 4 of 5 (previously 3 of 5)**
- 4. Production Well Density: 4 of 5 (previously 3.75 of 3.75)**
5. Irrigated Acreage: 4 of 5
- 6. Groundwater Priority/Reliance: 3.5 of 5 (previously 1.5 of 5)**
- 7. Documented Impacts: 3 of 5 (previously 1 of 5)**
  - For Groundwater Level Declines, Saltwater Intrusion, and Water Quality impacts
- 8. Habitat/Streamflow/Other Info: 2 of 5 (previously not incorporated)**

**Total Score of 24.5 (previously 16.3).** Above 14 = Medium, Above 21 = High

**Bold** denotes increase in component scoring between 2014 and 2018 DRAFT.

# Ongoing Activities/Next Steps

- Met with DWR Staff regarding DRAFT Results in late May
  - Local impacts of Prioritization
  - DWR willing to incorporate local information if more appropriate prior to finalizing prioritization
  - Discussed potential for Basin Boundary Modifications (window currently closes July 31)
- Reviewing methodology differences and statewide datasets applied to prioritization ranking
- Discussions with other local agencies impacted by potential changes in prioritization
- Developing comments to DWR on DRAFT Prioritization results in coordination with other local agencies, GSAs and advisory committees
- Reassessing potential for Basin Boundary Modifications in other basins (by GSA and/or other local agencies)